



Technical Document

Sun Solaris Printing

- » RPM Elite 5.0
- » RPM Select 5.0

- » Lower printing costs
- » Easy connectivity
- » More convenience
- » More flexibility

RPM Remote Print Manager easily connects Solaris UNIX servers with Windows-based printers and systems.

The purpose of this document is to assist you in configuring your Solaris UNIX server to print through RPM. It is intended for UNIX and network administrators. For these instructions, you need to know the IP address or DNS hostname of your computer where RPM is installed.

- ◇ RPM includes a full set of easy-to-use features for simplifying document workflows, connecting disparate platforms, and lowering printing complexity and costs.
- ◇ If you are interested in other printing software, check out [ExcelliPrint](#) or [INTELLiscribe](#)

Creating a Queue in RPM

1. In RPM, choose Create from the Queue menu.
2. Enter the name of the new queue you wish to add and click Create. The new queue will be created.
3. Highlight the queue and choose Settings from the Queue menu. Add the action(s) necessary to produce your desired results. For instance, if you want to archive the file to disk, add Archive to disk. If you want to print the documents, choose a Raw or Text printer action.
4. Now add any transforms you require. If the data is plain text, a Text markup transform may be used. Once in text markup, it can be converted to PDF or HTML with the appropriate transform, or printed to a Text printer action. If the incoming data is PCL, you need to first remove the PCL codes. Postscript format, requires no transforms, but a Raw printer action.

Note: These instructions are intended to provide only a brief introduction on RPM configuration. For more detailed instructions, refer to the [RPM manual](#).

Cross-Platform Printing & Workflows

iSeries™ (AS/400®)

zSeries® (OS/390®)

UNIX® (Linux™, AIX®, SCO®, Solaris®)

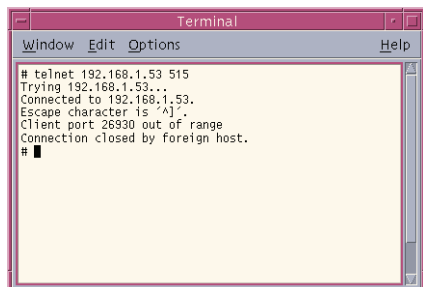
Other (Mac, VMS, Windows)



Windows®

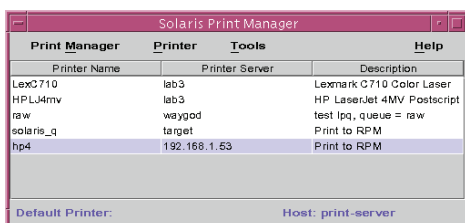
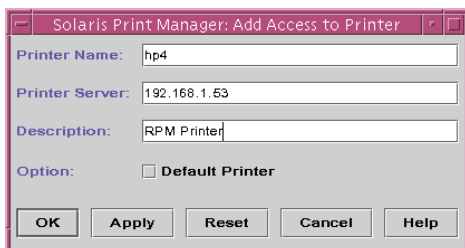
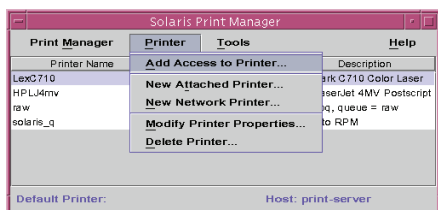
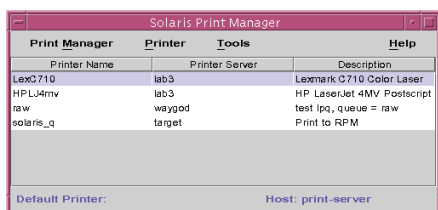
Simple. Affordable.
RPM Remote Print Manager.





Adding access to a printer with Solaris UNIX

1. We recommend you perform a telnet test to verify your UNIX server can make a TCP connection to RPM. To do so, type the following at a UNIX command prompt: **telnet <address> 515**. Substitute the IP address or hostname of your RPM host where appropriate.
2. Open the Solaris Print Manager, a graphical printer configuration tool for the Common Desktop Environment (CDE) used by Solaris. There is also a text-based printer configuration utility for configuring printers without the CDE.
3. Choose Add Access to Printer from the Printer menu.
4. When prompted to enter the printer name, enter the RPM queue name. The Print Server parameter needs the RPM computer's IP address. The description is optional. If this is the default printer, select this option. Now press OK.
5. In the Solaris Print Manager dialog box, you should now see this new printer listed.
6. To test this printer, you can run the following command from a UNIX command line: **cat /etc/printcap | lp -d hp4**.



Congratulations, you have now successfully configured your Solaris server to print through RPM. If you have different users logging in, you could modify their user profile to use this printer as their default.